

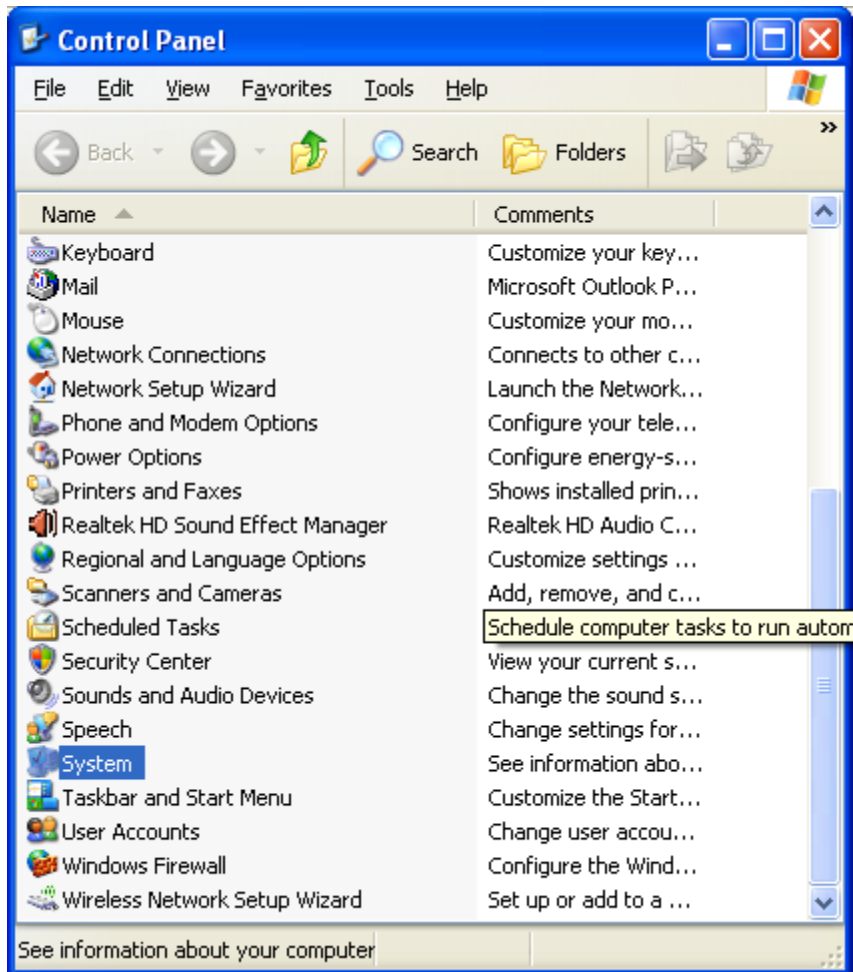
# UPDATING NISTUNE DRIVERS

Problems with FTDI drivers used on our Type 1 boards and PLMS USB consult cables have caused issues with Windows Vista to freeze up the PC completely

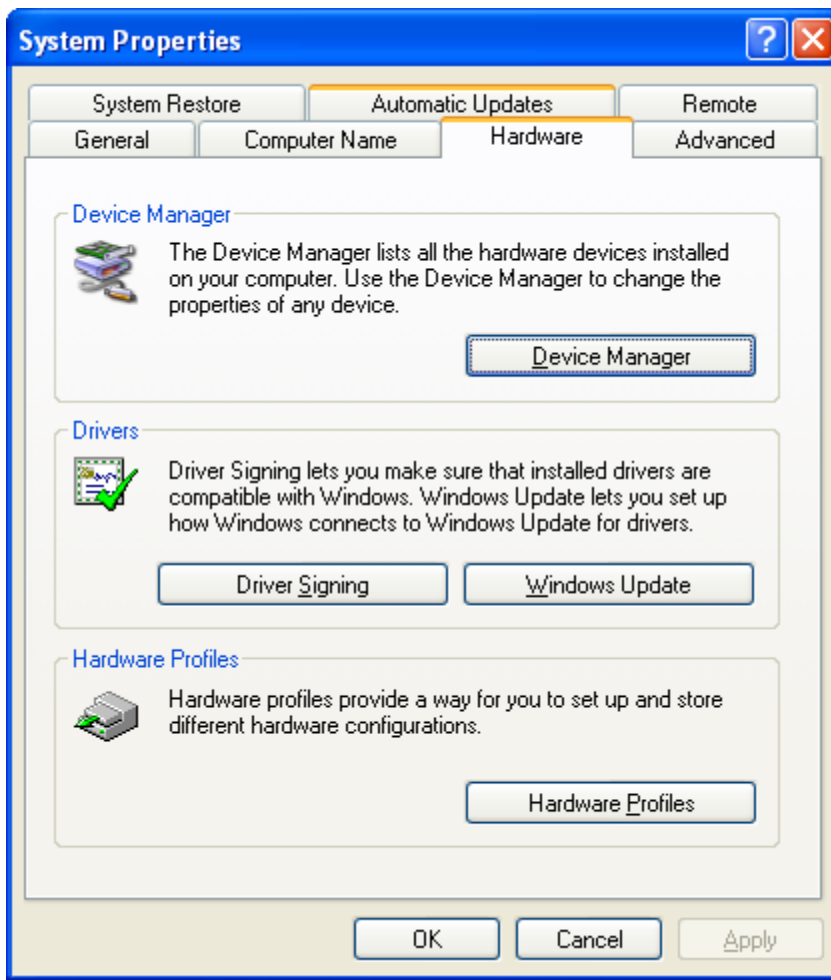
Below are the instructions for uninstalling these drivers. Reinstall the drivers supplied with Nistune 0.9266 or later versions to get around this problem

## STEP 1

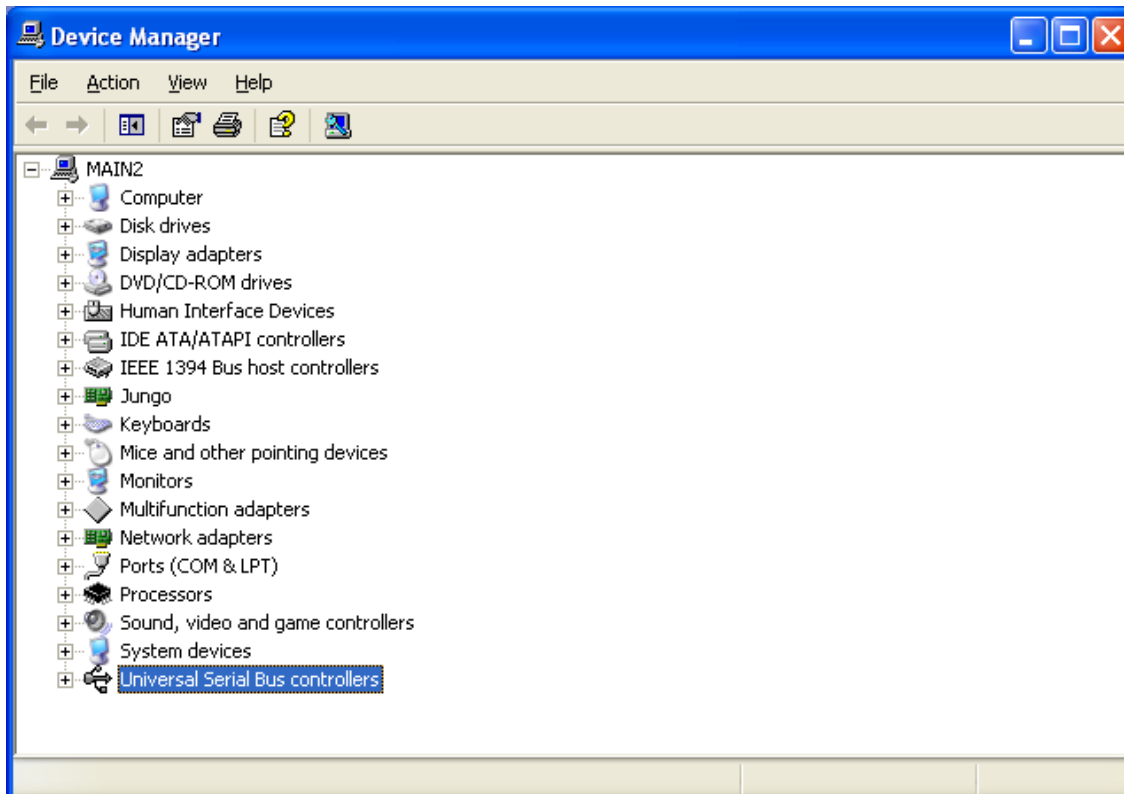
Control Panel and then System



Hardware Tab



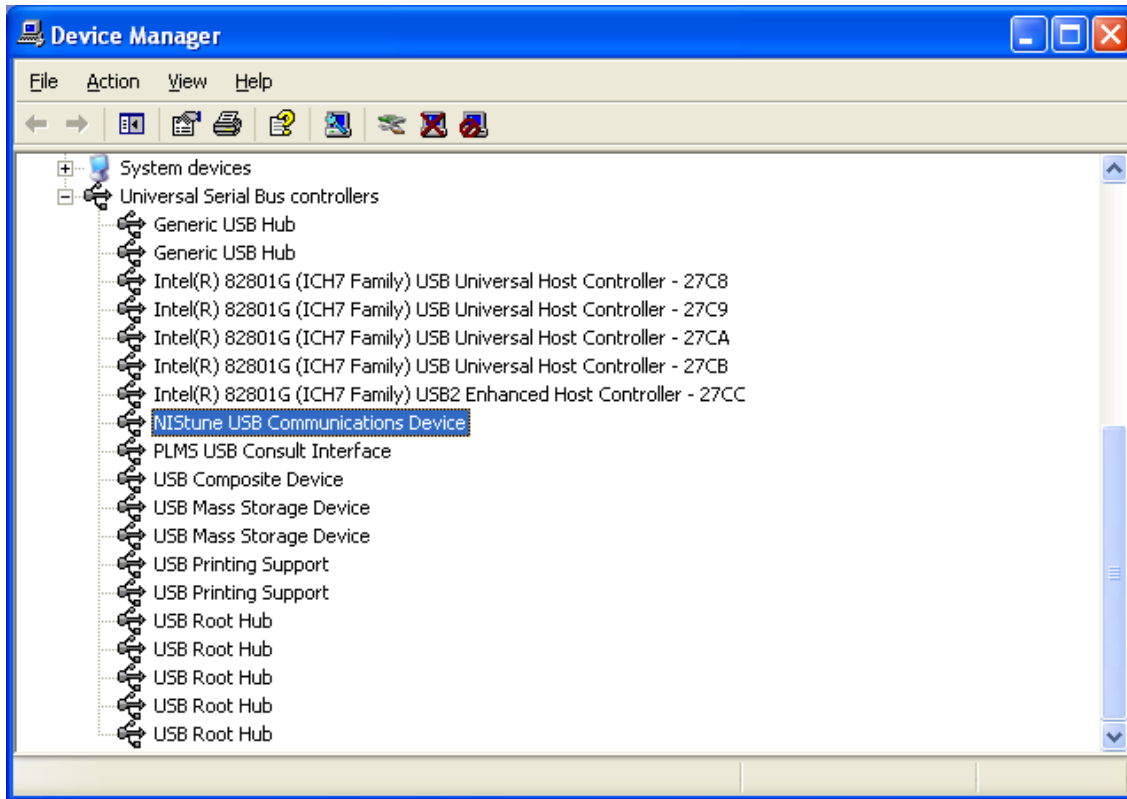
## Device Manager



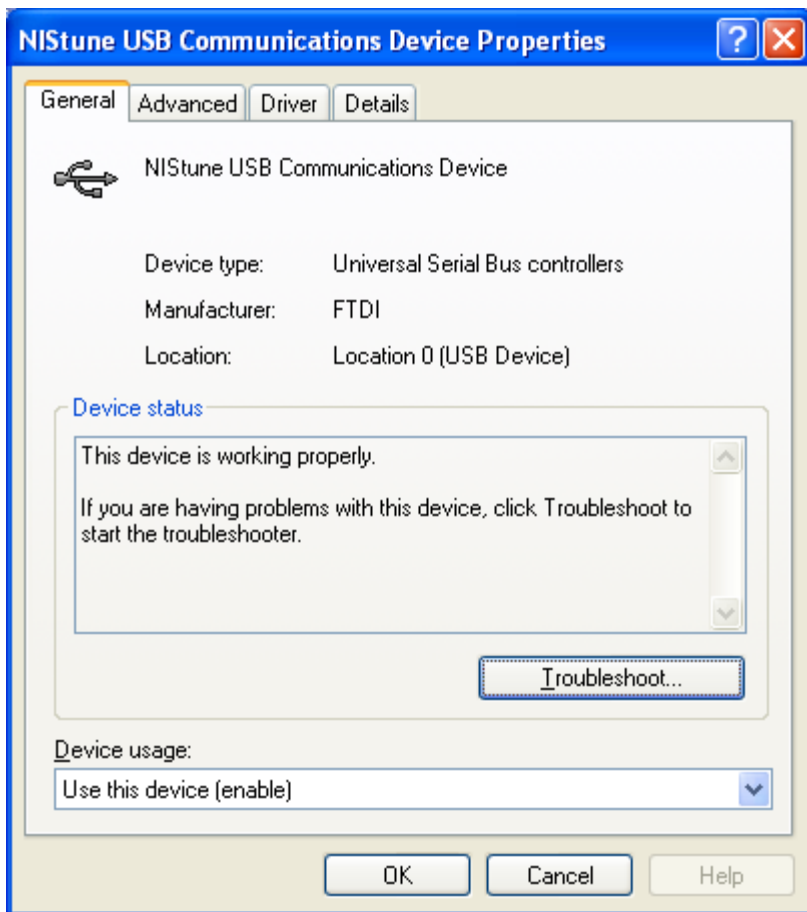
Expand Universal Serial Bus Controllers

**STEP 2 : ONLY FOR TYPE 1 BOARD DRIVERS**

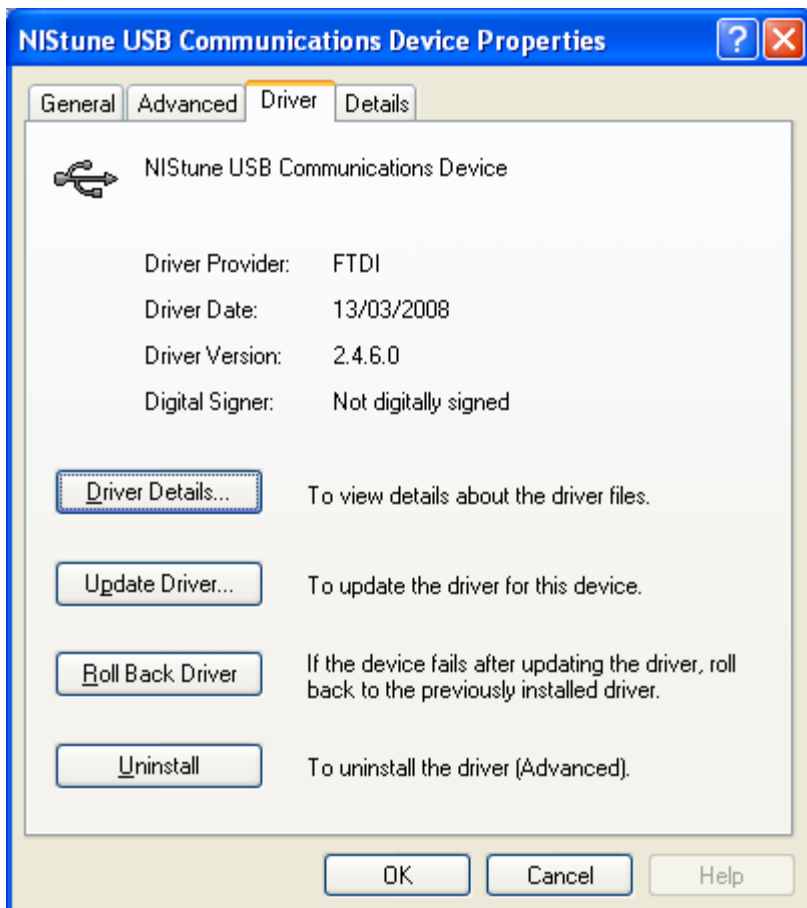
These show up as NIStune USB Communications Device



Right click – Properties



### Driver tab



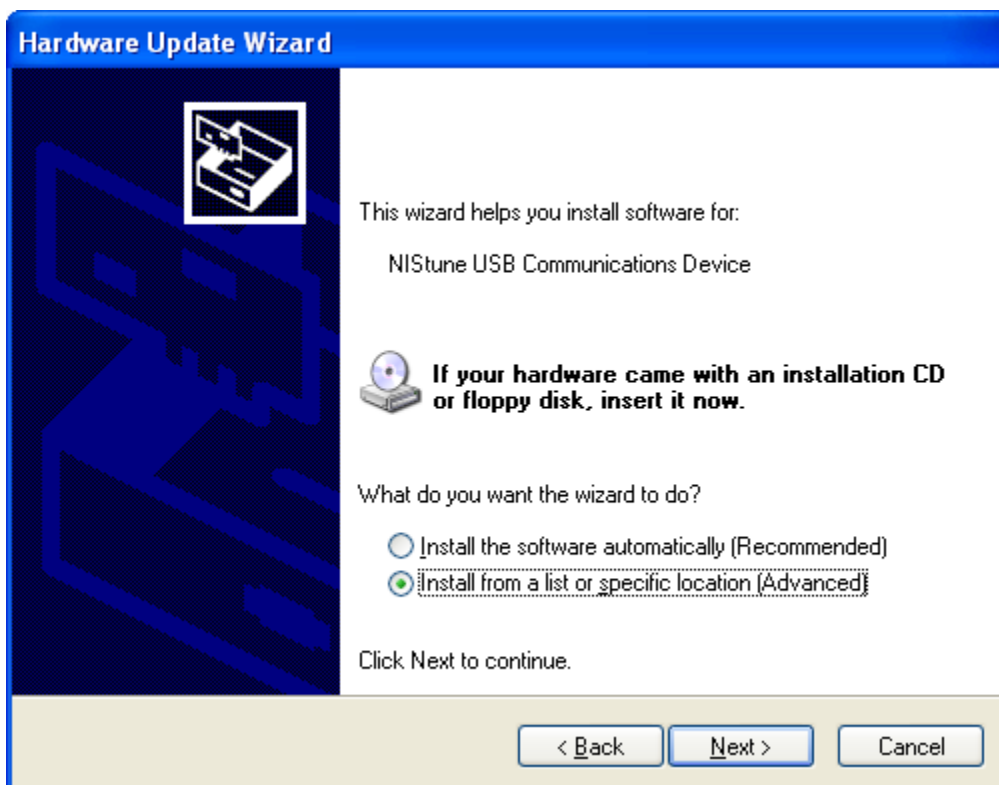
Latest version is 2.4.6.0

If you don't have this version you can upgrade by doing the following

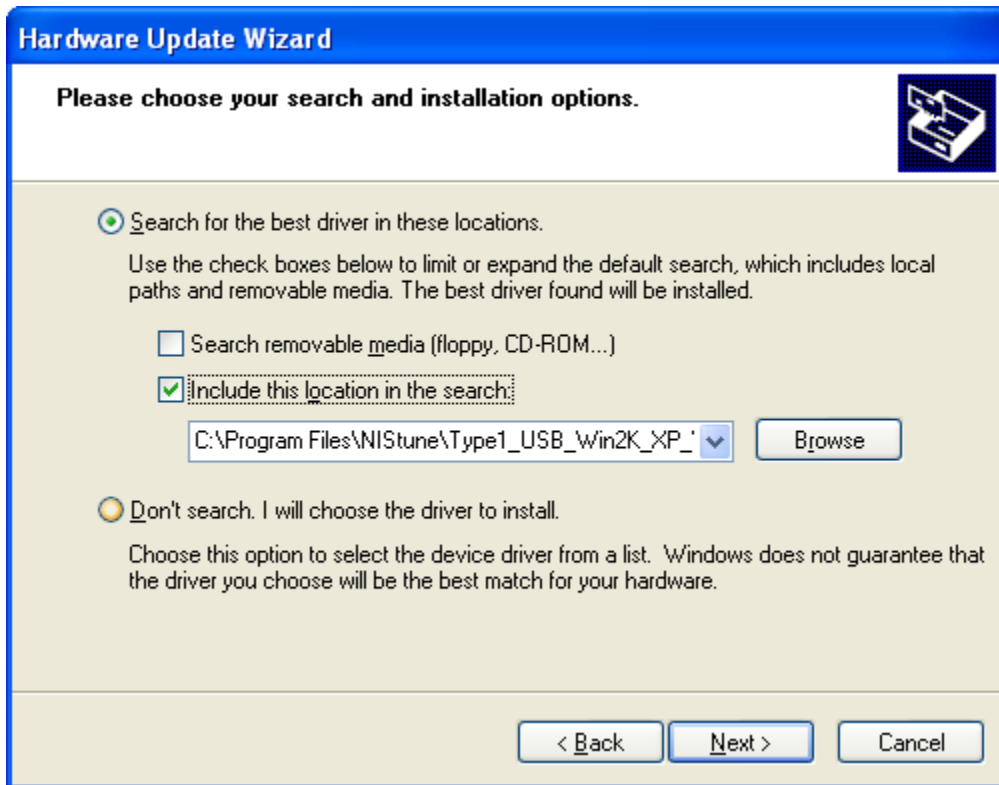
Update Driver



"No, Not this time" and then Next



“Install from a list or specific location” and then Next



Search for best and use the location of where you used NIStune and the driver directory inside of it

For Windows 2000/XP/Vista

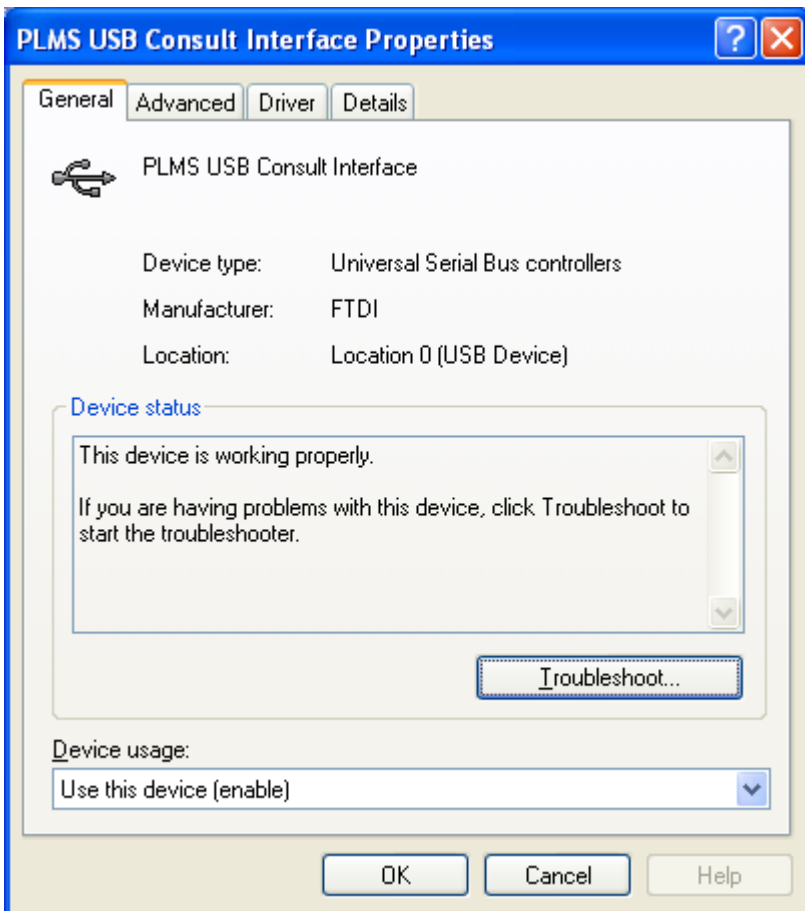
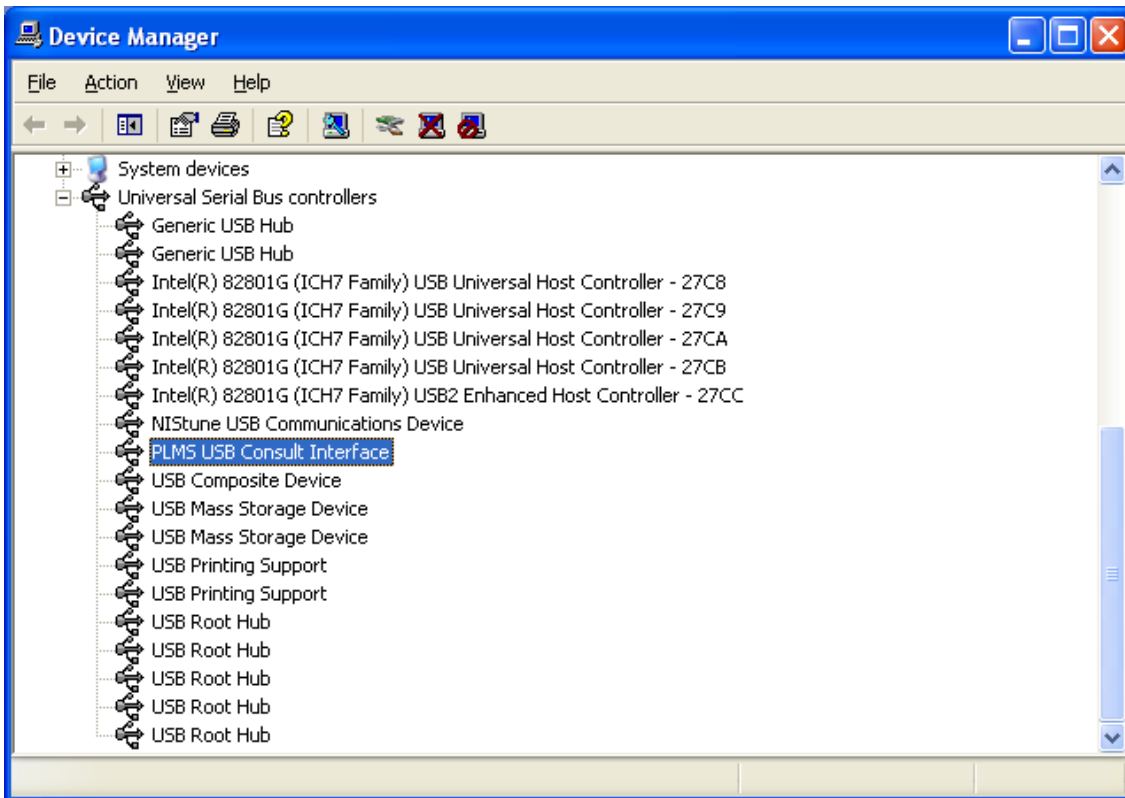
C:\Program Files\NIStune\Type1\_USB\_Win2K\_XP\_Vista\_Drivers

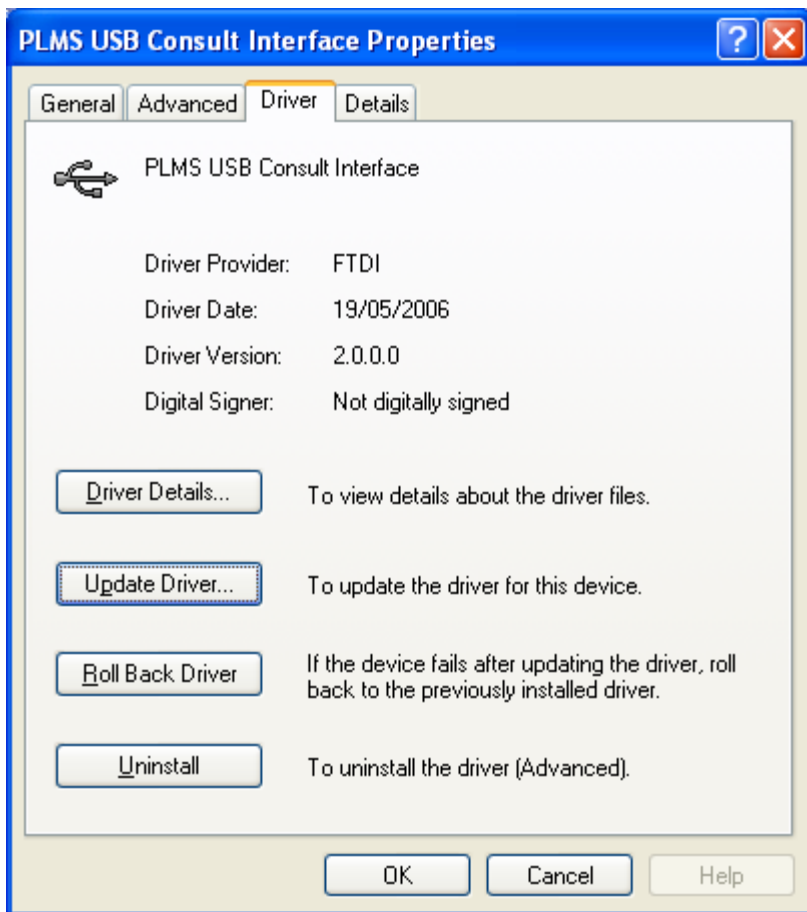
For Windows 98/ME

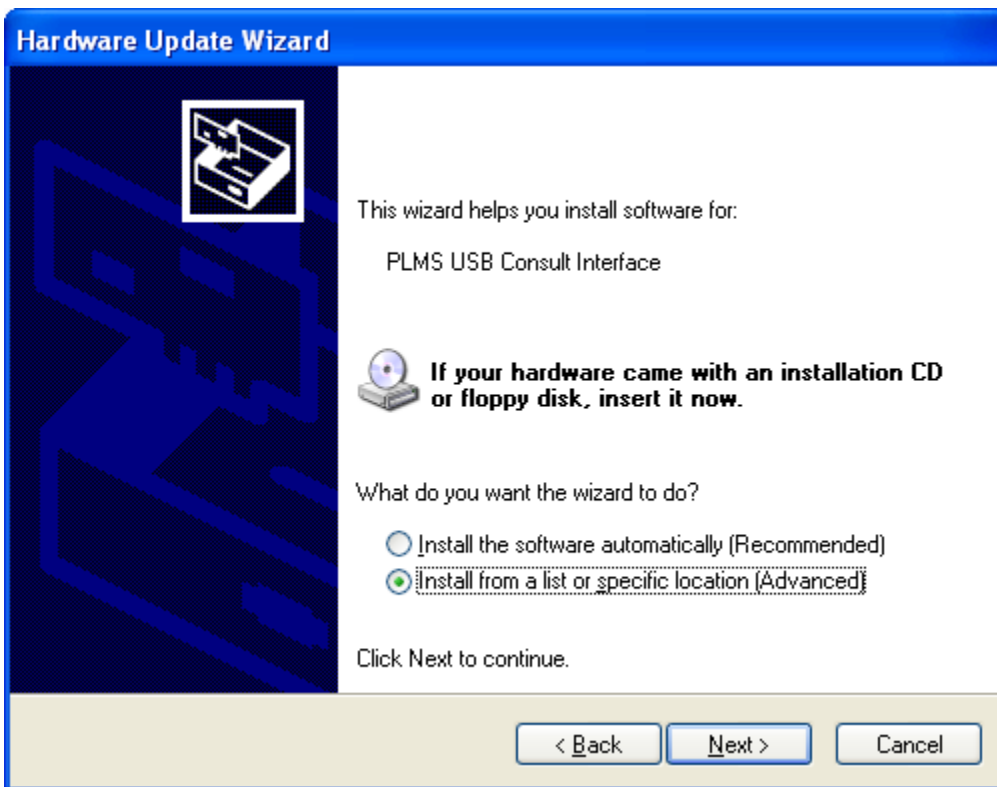
C:\Program Files\NIStune\Type1\_USB\_Win98\_ME\_Drivers

Next and then will install the driver

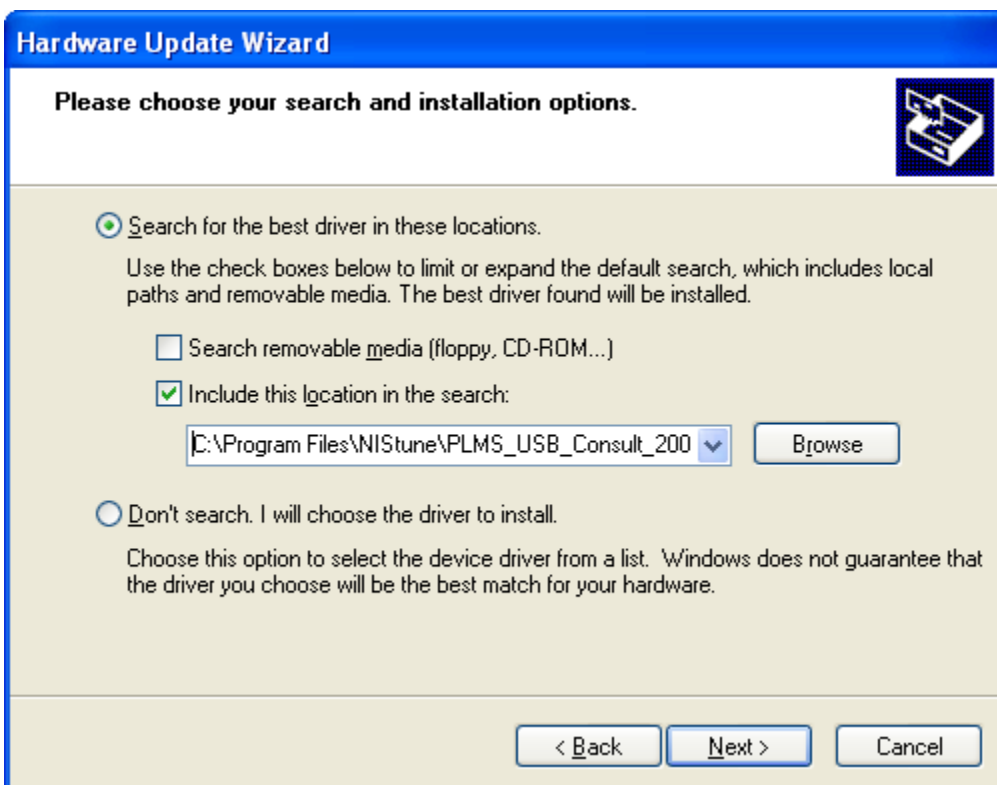
**STEP 2: ONLY FOR PLMS USB CONSULT CABLE DRIVERS**







C:\Program Files\NISstune\PLMS\_USB\_Consult\_2000\_XP\_Vista\_Drivers  
C:\Program Files\NISstune\PLMS\_USB\_Consult\_Win98\_ME\_Drivers



## Hardware Installation



The software you are installing for this hardware:

PLMS USB Consult Interface

has not passed Windows Logo testing to verify its compatibility with Windows XP. ([Tell me why this testing is important.](#))

**Continuing your installation of this software may impair or destabilize the correct operation of your system either immediately or in the future. Microsoft strongly recommends that you stop this installation now and contact the hardware vendor for software that has passed Windows Logo testing.**

## Hardware Update Wizard

Please wait while the wizard installs the software...



PLMS USB Consult Interface



Setting a system restore point and backing up old files in case your system needs to be restored in the future.

## Hardware Update Wizard



### Completing the Hardware Update Wizard

The wizard has finished installing the software for:



PLMS USB Consult Interface

The hardware you installed will not work until you restart your computer.

Click Finish to close the wizard.

< Back

Finish

Cancel